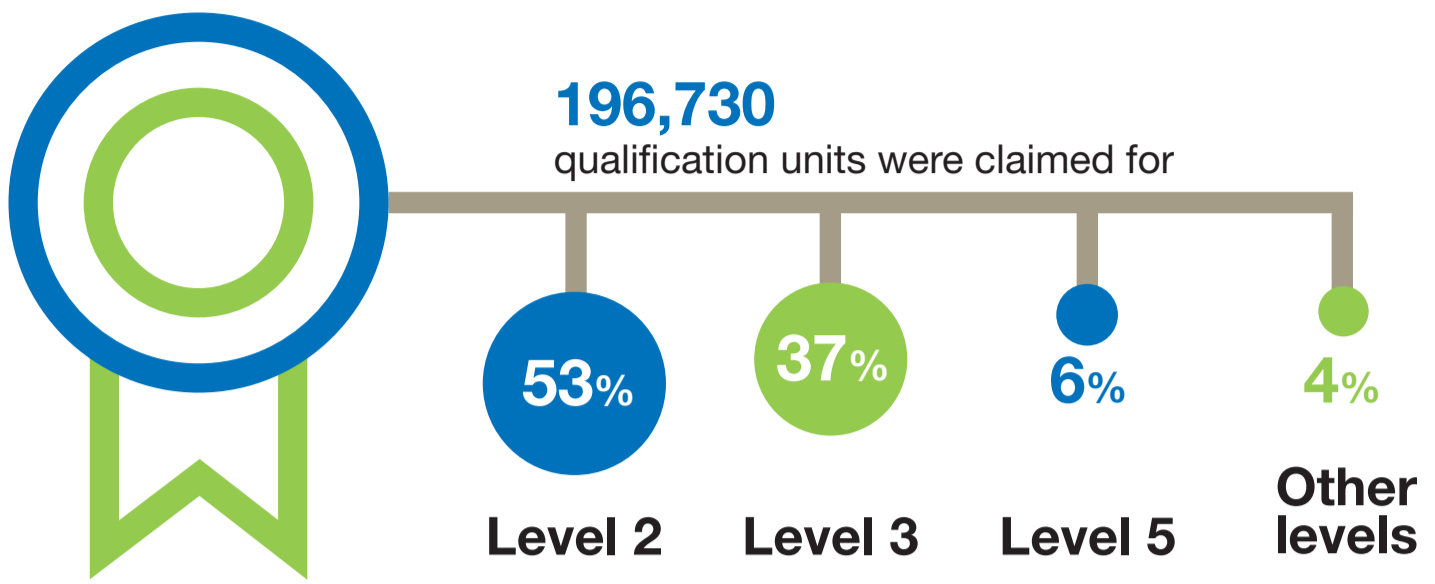


The Workforce Development Fund

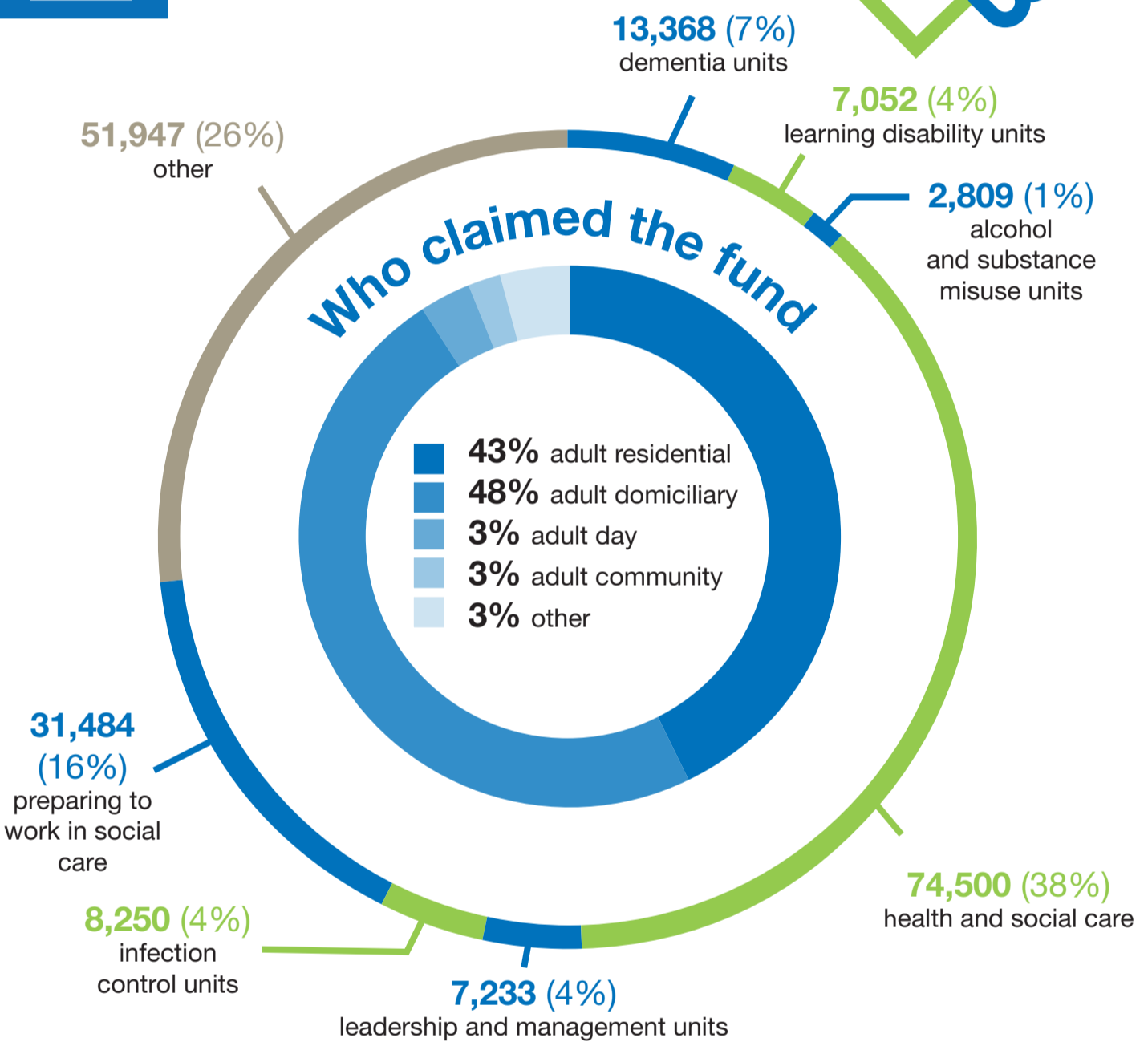
2017-18



Who did the fund support?



3,406 establishments claimed for **20,001** workers



Without the Workforce Development Fund we would not be able to afford to deliver a number of courses that offer career progression and enhance skills in the health and social care sector. The WDF also helps us attract individuals into the health and social care sector because of the learning and development opportunities.

Cathy Watkins, Registered Manager, Kemble at Home, August 2018

