

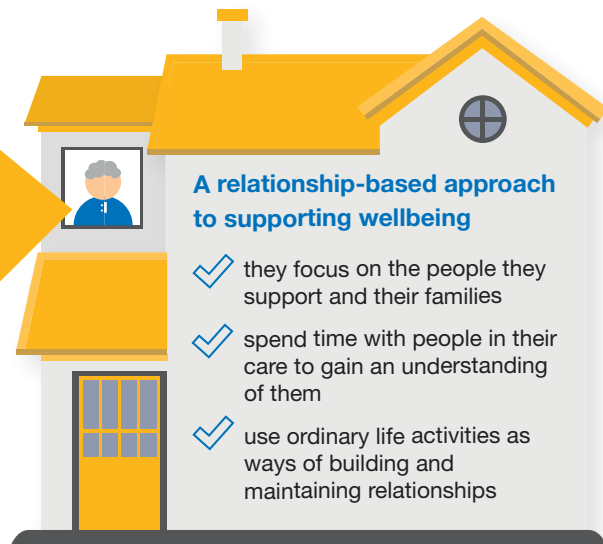
Registered nurses:

Recognising the responsibilities and contribution of registered nurses within social care

Contribution to health and social care agendas

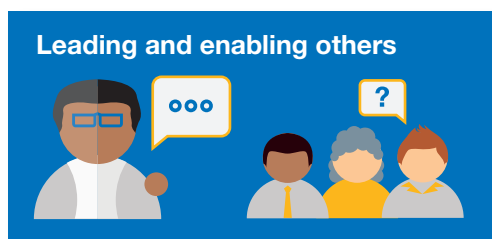
The adult social care sector workforce includes employment of **34,000¹** registered nurses and makes a big contribution to

- ✓ hospital admission avoidance
- ✓ early discharge
- ✓ managing long term and enduring conditions
- ✓ prevention
- ✓ re-ablement
- ✓ health and wellbeing.



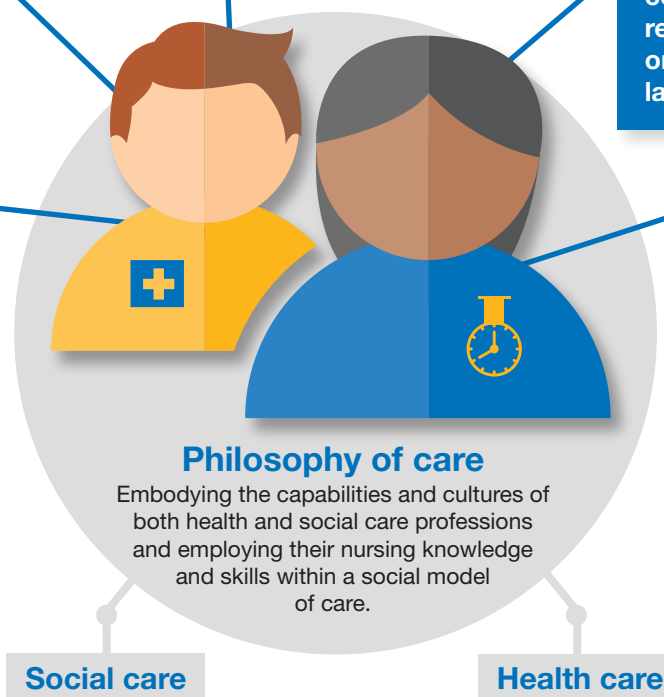
Professional autonomy

Drawing on their professional nursing knowledge to make complex decisions, in line with The Code (NMC, 2018).



A multi-faceted role

- Managing complex health issues
- Day-to-day management
- Leadership responsibility
- Systems to provide integrated care



At the frontline of health and social care boundaries

Registered nurses in social care build relationships with:

- ✓ GPs
- ✓ hospital clinicians
- ✓ physiotherapists
- ✓ occupational therapists
- ✓ social workers
- ✓ housing providers.

www.skillsforcare.org.uk/registerednursesinsocialcare.

¹ Overview of the size and structure of the adult social care sector and workforce in England, as at 2020-21